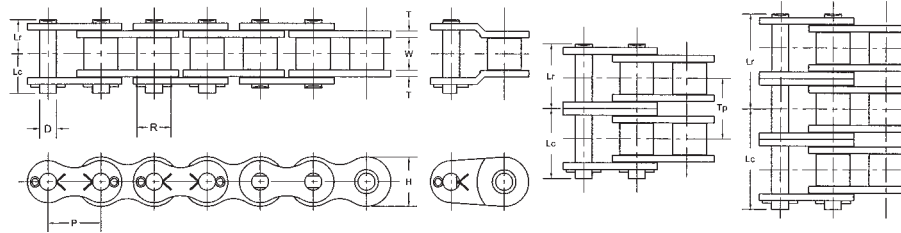


## 200 ASME/ANSI Roller Chain



### Chain Dimensions

Note: Rated Working Load is to be used only in conjunction with "slow speed selection method"

Common Dimensions (Inches)									
ASME/ANSI Chain Number	Chain Pitch P	Inside Width W	Roller Diameter R	Pin Diameter D	Link Plate Thickness T	Roller Link Plate Height H	Number of Links in 10ft	Available Construction	
								Cottered	Riveted
200	2 1/2	1.500	1.562	0.781	0.312	2.354	48	Yes	Yes

Pin Lengths and Chain Ratings									
ASME/ANSI Chain Number	Number of Strands	Riv. Pin End to C/L of Chain Lr	Cot. Pin End to C/L of Chain Lc	Overall Length Riveted Pin Lr + Lr	Overall Length Conn. Pin Lr + Lc	Transverse Pitch for Multi-strand TP	Rated Working Load (lbs)	Average Ultimate Strength (lbs)	Average Chain Weight (lbs/ft)
200	1	1.542	1.876	3.084	3.418	-	18,600	105,500	11.38
200-2	2	2.953	3.288	5.906	6.241	2.819	31,620	211,000	22.67
200-3	3	4.361	4.852	8.722	9.213	2.819	46,500	316,500	33.96
200-4	4	5.774	6.132	11.548	11.906	2.819	61,380	422,000	45.25
200-5	5	7.195	7.534	14.390	14.729	2.819	72,540	527,500	56.54
200-6	6	8.605	8.939	17.210	17.544	2.819	85,560	633,000	67.83

### Horsepower Ratings

Please consult Hitachi Maxco product engineering for horsepower ratings to the right of the black boundry line.

Number Teeth Small Sprocket	Maximum Speed of Small Sprocket (rpm)																			
	10	15	20	30	40	50	70	100	150	200	250	300	350	400	450	500	550	600	650	700
9	6.52	9.40	12.17	17.53	22.71	27.77	37.59	51.81	74.63	96.68	118.19	139.26	145.90	119.42	100.08	85.45	74.07	65.00		
10	7.31	10.53	13.64	19.65	25.45	31.11	42.11	58.06	83.62	108.34	132.43	156.05	170.88	139.87	117.21	100.08	86.75	76.13		
11	8.10	11.67	15.12	21.78	28.21	34.48	46.68	64.35	92.69	120.08	146.79	172.97	197.15	161.36	135.23	115.46	100.08	87.83	77.90	
12	8.90	12.82	16.61	23.92	30.99	37.88	51.28	70.69	101.82	131.91	161.25	190.01	218.29	183.86	154.08	131.56	114.03	100.08		
13	9.70	13.98	18.11	26.08	33.79	41.30	55.91	77.07	111.02	143.82	175.81	207.16	238.00	207.31	173.74	148.34	128.58	112.85		
14	10.51	15.14	19.62	28.25	36.60	44.74	60.57	83.50	120.27	155.81	190.46	224.43	257.83	231.69	194.17	165.78	143.70	126.11		
15	11.32	16.31	21.13	30.44	39.43	48.21	65.26	89.96	129.57	167.86	205.20	241.79	277.77	256.95	215.34	183.86	159.37	139.87		
16	12.14	17.49	22.66	32.64	42.28	51.69	69.97	96.45	138.92	179.98	220.01	259.24	297.82	283.07	237.23	202.55	175.56	154.08		
17	12.96	18.67	24.19	34.85	45.14	55.18	74.70	102.98	148.33	192.16	234.90	276.78	317.98	310.02	259.81	221.83	192.28	168.75		
18	13.79	19.86	25.73	37.06	48.02	58.70	79.46	109.53	157.77	204.39	249.86	294.41	338.22	337.77	283.07	241.69	209.49	183.86		
19	14.62	21.06	27.28	39.29	50.90	62.23	84.23	116.12	167.26	216.69	264.88	312.11	358.56	366.30	306.98	262.11	227.19	199.39		
20	15.45	22.26	28.83	41.53	53.80	65.77	89.03	122.73	176.78	229.03	279.97	329.89	378.98	395.60	331.53	283.07	245.36	215.34		
21	16.29	23.46	30.39	43.78	56.72	69.33	93.85	129.37	186.35	241.42	295.11	347.74	399.49	425.64	356.71	304.56	263.99			
22	17.13	24.67	31.96	46.03	59.64	72.90	98.69	136.04	195.95	253.86	310.32	365.66	420.07	456.40	382.49	326.57	283.07			
23	17.97	25.88	33.53	48.30	62.57	76.49	103.54	142.73	205.59	266.34	325.58	383.64	440.73	487.87	408.86	349.09	302.59			
24	18.81	27.10	35.11	50.57	65.51	80.08	108.41	149.44	215.26	278.87	340.90	401.69	461.46	520.03	435.81	372.10	322.53			
25	19.66	28.32	36.69	52.85	68.47	83.69	113.30	156.18	224.96	291.44	356.26	419.79	482.26	543.85	463.33	395.60	342.90			
26	20.51	29.55	38.28	55.14	71.43	87.32	118.20	162.94	234.69	304.05	371.68	437.95	503.13	567.38	491.41	419.57	363.68			
Lube	Type A			Type B							Type C									

Horsepower values given in the tables are for single strand chains. For multiple strand chains use the "Multi-Strand Factors" below.

- Type A: Manual or Drip Lubrication
- Type B: Bath or Sliger Disc Lubrication
- Type C: Oil Stream or Pressure Spray Lubrication

Number of Strands Factor	Multi-Strand Factors				
	2	3	4	5	6
	1.7	2.5	3.3	3.9	4.6