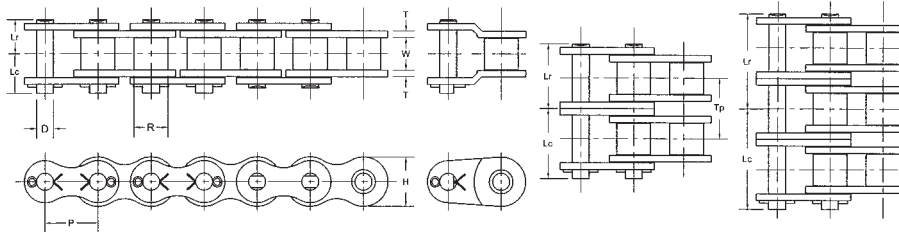


180 ASME/ANSI Roller Chain



Chain Dimensions

Note: Rated Working Load is to be used only in conjunction with "slow speed selection method"

Common Dimensions (Inches)									
ASME/ANSI Chain Number	Chain Pitch P	Inside Width W	Roller Diameter R	Pin Diameter D	Link Plate Thickness T	Roller Link Plate Height H	Number of Links in 10ft	Available Construction	
180	2 1/4	1.406	1.406	0.687	0.281	2.067	54	Cottered	Riveted
Yes								Yes	Yes

Pin Lengths and Chain Ratings									
ASME/ANSI Chain Number	Number of Strands	Riv. Pin End to C/L of Chain Lr	Cot. Pin End to C/L of Chain Lc	Overall Length Riveted Pin Lr + Lr	Overall Length Conn. Pin Lr + Lc	Transverse Pitch for Multi-strand TP	Rated Working Load (lbs)	Average Ultimate Strength (lbs)	Average Chain Weight (lbs/ft)
180	1	1.429	1.658	2.858	3.087	-	16,600	81,500	9.00
180-2	2	2.720	2.950	5.440	5.670	2.587	28,220	163,000	17.89
180-3	3	4.027	4.249	8.054	8.276	2.587	41,500	244,500	26.78
180-4	4	5.319	5.544	10.638	10.863	2.587	54,780	326,000	35.67
180-5	5	6.613	6.837	13.226	13.450	2.587	64,740	407,500	44.56
180-6	6	7.907	8.130	15.814	16.037	2.587	76,360	489,000	53.45

Horsepower Ratings

Please consult Hitachi Maxco product engineering for horsepower ratings to the right of the black boundary line.

Number Teeth Small Sprocket	Maximum Speed of Small Sprocket (rpm)																								
	10	25	50	100	150	200	250	300	350	400	450	500	550	600	650	700	750	800	850	900	950	1000	1050	1100	1150
9	5.21	11.89	22.19	41.40	59.63	77.25	94.44	111.28	127.84	109.77	91.99	78.54	68.08	59.75	52.99	47.41	42.75	38.81							
10	5.84	13.32	24.86	46.39	66.82	86.56	105.82	124.69	143.24	128.56	107.74	91.99	79.74	69.98	62.06	55.53	50.07	45.45							
11	6.47	14.77	27.55	51.42	74.06	95.95	117.29	138.20	158.77	148.32	124.30	106.13	91.99	80.73	71.60	64.07	57.77	52.44	47.90	46.90	40.50	37.50	34.90	32.50	
12	7.11	16.22	30.27	56.48	81.36	105.40	128.85	151.82	174.42	169.00	141.63	120.92	104.81	91.99	81.58	73.00	65.82	59.75	54.60	50.10	46.20	42.80	39.70	37.10	
13	7.75	17.69	33.00	61.58	88.71	114.92	140.48	165.53	190.16	190.55	159.69	136.35	118.19	103.72	91.99	82.31	74.22	67.37	61.50	56.50	52.10	48.20	44.80		
14	8.40	19.16	35.75	66.72	96.10	124.50	152.19	179.32	206.01	212.96	178.47	152.38	132.08	115.92	102.81	91.99	82.95	75.29	68.70	63.10	58.20	53.90	50.10		
15	9.05	20.64	38.52	71.88	103.53	134.13	163.96	193.20	221.95	236.18	197.93	169.00	146.48	128.56	114.01	102.02	91.99	83.50	76.20	70.00	64.50	59.70	55.50		
16	9.70	22.13	41.30	77.07	111.00	143.81	175.79	207.14	237.97	260.19	218.05	186.17	161.37	141.63	125.60	112.39	101.34	91.99	84.20	77.10	71.10	65.80	61.20		
17	10.36	23.63	44.09	82.28	118.52	153.54	187.69	221.16	254.07	284.96	238.81	203.90	176.74	155.11	137.56	123.09	110.99	100.75	92.00	84.40	77.90	72.20			
18	11.02	25.13	46.90	87.52	126.06	163.32	199.64	235.24	270.25	304.76	260.19	222.15	192.56	169.00	149.88	134.11	120.92	109.77	100.0	92.00	84.80	78.50			
19	11.68	26.64	49.72	92.78	133.64	173.14	211.65	249.39	286.50	323.08	282.17	240.92	208.82	183.27	162.54	145.44	131.14	119.04	109.0	99.80	92.00	85.20			
20	12.35	28.16	52.55	98.07	141.25	183.00	223.70	263.59	302.82	341.49	304.73	260.19	225.53	197.93	175.54	157.07	141.63	128.56	117.0	108.0	99.30	92.00			
21	13.01	29.69	55.40	103.37	148.90	192.90	235.80	277.85	319.20	359.96	327.87	279.94	242.65	212.96	188.87	169.00	152.38	138.32	126.0	116.0	107.0	99.00			
22	13.68	31.22	58.25	108.70	156.57	202.84	247.95	292.17	335.65	378.51	351.57	300.17	260.19	228.35	202.52	181.21	163.39	148.32	135.0	124.0	115.0				
23	14.36	32.75	61.11	114.04	164.27	212.81	260.15	306.54	352.16	397.13	375.81	320.87	278.13	244.10	216.48	193.70	174.66	158.54	145.0	133.0	123.0				
24	15.03	34.29	63.99	119.41	172.00	222.82	272.38	320.96	368.72	415.81	400.58	342.02	296.46	260.19	230.75	206.47	186.17	169.00	154.0	142.0	131.0				
25	15.71	35.84	66.87	124.79	179.75	232.87	284.66	335.42	385.34	434.55	425.88	363.62	315.18	276.62	245.32	219.51	197.93	179.67	164.0	151.0	139.0				
26	16.39	37.39	69.77	130.19	187.53	242.94	296.98	349.94	402.01	453.35	451.69	385.66	334.28	293.38	260.19	232.81	209.92	190.55	174.0	160.0					
28	17.76	40.50	75.58	141.04	203.15	263.19	321.73	379.10	435.51	491.13	504.79	431.00	373.58	327.87	290.78	260.19	234.61	212.96	194.0	178.0					
30	19.13	43.64	81.43	151.95	218.87	283.55	346.61	408.42	469.20	529.12	559.83	477.99	414.32	363.62	322.48	288.56	260.19	236.18	216.0	198.0					
32	20.51	46.79	87.31	162.92	234.67	304.02	371.64	437.90	503.07	567.32	616.74	526.58	456.43	400.58	355.26	317.89	286.63	260.19	238.0						
35	22.59	51.54	96.18	179.47	258.51	334.91	409.40	482.40	554.20	624.97	694.85	602.34	522.10	458.22	406.37	363.62	327.87	297.62	220.0						
40	26.10	59.54	111.10	207.32	298.62	386.87	472.91	557.24	640.17	721.92	802.65	735.92	637.88	559.83	496.50	444.26	400.58	363.62							
45	29.64	67.61	126.17	235.44	339.13	439.34	537.06	632.83	727.01	819.85	911.53	878.13	761.15	668.02	592.44	530.11	477.99	433.89							
Lube	Type A	Type B										Type C													

Horsepower values given in the tables are for single strand chains. For multiple strand chains use the "Multi-Strand Factors" below.

- Type A: Manual or Drip Lubrication
- Type B: Bath or Slinger Disc Lubrication
- Type C: Oil Stream or Pressure Spray Lubrication

Number of Strands Factor	Multi-Strand Factors				
	2	3	4	5	6
	1.7	2.5	3.3	3.9	4.6