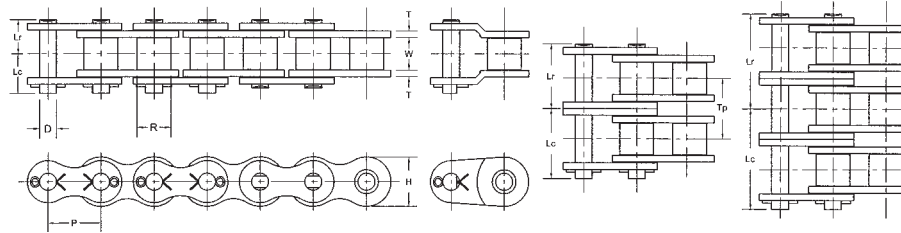


160 ASME/ANSI Roller Chain



Chain Dimensions

Note: Rated Working Load is to be used only in conjunction with "slow speed selection method"

Common Dimensions (Inches)									
ASME/ANSI Chain Number	Chain Pitch P	Inside Width W	Roller Diameter R	Pin Diameter D	Link Plate Thickness T	Roller Link Plate Height H	Number of Links in 10ft	Available Construction	
								Cottered	Riveted
160	2	1.250	1.125	0.562	0.250	1.839	60	Yes	Yes

Pin Lengths and Chain Ratings									
ASME/ANSI Chain Number	Number of Strands	Riv. Pin End to C/L of Chain	Cot. Pin End to C/L of Chain	Overall Length Riveted Pin	Overall Length Conn. Pin	Transverse Pitch for Multi-strand	Rated Working Load (lbs)	Average Ultimate Strength (lbs)	Average Chain Weight (lbs/ft)
		Lr	Lc	Lr + Lr	Lr + Lc	TP			
160	1	1.268	1.437	2.535	2.705	-	14,900	63,200	6.58
160-2	2	2.417	2.591	4.835	5.008	2.303	25,330	126,400	13.07
160-3	3	3.571	3.740	7.142	7.311	2.303	37,250	189,600	19.60
160-4	4	4.732	4.902	9.465	9.634	2.303	49,170	252,800	26.05
160-5	5	5.882	6.059	11.764	11.941	2.303	58,110	316,000	32.54
160-6	6	7.035	7.205	14.071	14.240	2.303	68,540	379,200	39.03

Horsepower Ratings

Please consult Hitachi Maxco product engineering for horsepower ratings to the right of the black boundry line.

Number Teeth Small Sprocket	Maximum Speed of Small Sprocket (rpm)																								
	10	25	50	100	150	200	250	300	350	400	450	500	550	600	650	700	750	800	850	900	1000	1100	1200	1300	1400
9	3.87	8.82	16.46	30.72	44.25	57.32	70.07	82.57	94.86	99.90	83.72	71.48	61.96	54.38	48.22	43.15	38.91	35.32							
10	4.33	9.88	18.45	34.42	49.58	64.23	78.52	92.52	106.29	117.00	98.05	83.72	72.57	63.69	56.48	50.54	45.57	41.37							
11	4.80	10.96	20.45	38.15	54.96	71.20	87.03	102.55	117.81	132.86	113.12	96.58	83.72	73.47	65.16	58.31	52.57	47.72	43.60	40.00	34.10	29.60	26.00	23.00	
12	5.28	12.04	22.46	41.91	60.37	78.21	95.61	112.66	129.42	145.95	128.89	110.05	95.39	83.72	74.25	66.44	59.90	54.38	49.60	46.60	38.90	33.70	29.60	26.30	
13	5.75	13.12	24.49	45.70	65.82	85.27	104.24	122.83	141.11	159.13	145.33	124.09	107.56	94.40	83.72	74.91	67.55	61.31	56.00	51.40	43.90	38.00	33.40	29.60	
14	6.23	14.22	26.53	49.50	71.31	92.38	112.92	133.06	152.86	172.38	162.42	138.68	120.20	105.50	93.56	83.72	75.49	68.52	62.60	57.40	49.00	42.50	37.30	33.10	
15	6.71	15.32	28.58	53.33	76.82	99.52	121.66	143.36	164.69	185.72	180.13	153.80	133.31	117.00	103.76	92.85	83.72	75.99	69.40	63.70	54.40	47.10	41.40		
16	7.20	16.42	30.64	57.18	82.37	106.71	130.44	153.70	176.58	199.13	198.44	169.43	146.86	128.89	114.31	102.28	92.23	83.72	76.40	70.20	59.90	51.90	45.60		
17	7.69	17.53	32.72	61.05	87.94	113.93	139.27	164.10	188.53	212.60	217.33	185.56	160.84	141.16	125.19	112.02	101.01	91.69	83.70	76.80	65.60	56.90	49.90		
18	8.18	18.65	34.80	64.94	93.54	121.18	148.14	174.55	200.53	226.14	236.79	202.17	175.24	153.80	136.40	122.05	110.05	99.90	91.20	83.70	71.50	62.00	54.40		
19	8.67	19.77	36.89	68.85	99.17	128.47	157.05	185.05	212.59	239.74	256.79	219.25	190.05	166.79	147.92	132.36	119.35	108.33	98.90	90.80	77.50	67.20	59.00		
20	9.16	20.90	39.00	72.77	104.81	135.79	165.99	195.59	224.70	253.39	277.33	236.79	205.25	180.13	159.75	142.95	128.89	117.00	107.0	98.10	83.70	72.60	63.70		
21	9.66	22.03	41.11	76.70	110.49	143.14	174.97	206.17	236.86	267.10	296.97	254.77	220.83	193.81	171.88	153.80	138.68	125.88	115.0	105.0	90.10	78.10	68.50		
22	10.15	23.16	43.22	80.66	116.18	150.51	183.99	216.80	249.06	280.86	312.27	273.18	236.79	207.82	184.30	164.91	148.70	134.98	123.0	113.0	96.60	83.70			
23	10.65	24.30	45.35	84.62	121.89	157.91	193.04	227.46	261.31	294.68	327.63	292.02	253.12	222.15	197.01	176.29	158.95	144.29	132.0	121.0	103.0	89.50			
24	11.15	25.44	47.48	88.60	127.63	165.34	202.12	238.16	273.60	308.54	343.04	311.27	269.80	236.79	210.00	187.91	169.43	153.80	140.0	129.0	110.0	95.40			
25	11.66	26.59	49.62	92.60	133.38	172.79	211.23	248.89	285.93	322.44	358.50	330.92	286.84	251.74	223.26	199.77	180.13	163.51	149.0	137.0	117.0	101.0			
26	12.16	27.74	51.77	96.60	139.15	180.27	220.37	259.66	298.30	336.40	374.01	350.98	304.22	267.00	236.79	211.88	191.05	173.42	158.0	145.0	124.0	108.0			
28	13.18	30.05	56.08	104.65	150.74	195.29	238.73	281.30	323.16	364.43	405.18	392.24	339.99	298.39	264.63	236.79	213.51	193.81	177.0	162.0	139.0	120.0			
30	14.19	32.38	60.42	112.75	162.40	210.40	257.20	303.06	348.16	392.62	436.52	435.01	377.06	330.92	293.48	262.61	236.79	214.94	196.0	180.0	154.0				
32	15.22	34.72	64.78	120.89	174.13	225.59	275.76	324.94	373.29	420.96	468.04	479.23	415.39	364.56	323.32	289.30	260.86	236.79	216.0	198.0	169.0				
35	16.77	38.24	71.37	133.17	191.82	248.51	303.78	357.95	411.23	463.74	515.60	548.18	475.15	417.01	369.83	330.92	298.39	270.86	247.0	227.0	180.0				
40	19.37	44.18	82.44	153.83	221.58	287.06	350.91	413.48	475.02	535.68	595.58	654.82	580.52	509.49	451.85	404.31	364.56	330.92	302.0	257.0					
45	21.99	50.17	93.62	174.70	251.64	326.00	398.51	469.57	539.46	608.34	676.37	743.65	692.70	607.95	539.16	482.44	435.01	394.87							
Lube	Type A	Type B										Type C													

Horsepower values given in the tables are for single strand chains. For multiple strand chains use the "Multi-Strand Factors" below.

- Type A: Manual or Drip Lubrication
- Type B: Bath or Sliger Disc Lubrication
- Type C: Oil Stream or Pressure Spray Lubrication

Number of Strands Factor	Multi-Strand Factors				
	2	3	4	5	6
	1.7	2.5	3.3	3.9	4.6