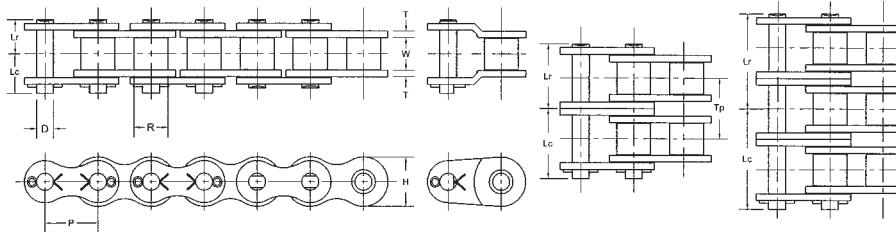


# 140 ASME/ANSI Roller Chain



## Chain Dimensions

Note: Rated Working Load is to be used only in conjunction with "slow speed selection method"

Common Dimensions (Inches)									
ASME/ANSI Chain Number	Chain Pitch P	Inside Width W	Roller Diameter R	Pin Diameter D	Link Plate Thickness T	Roller Link Plate Height H	Number of Links in 10ft	Available Construction	
<b>140</b>	1 3/4	1.000	1.000	0.500	0.219	1.610	68	Cottered	Riveted
Yes								Yes	Yes

Pin Lengths and Chain Ratings									
ASME/ANSI Chain Number	Number of Strands	Riv. Pin End to C/L of Chain Lr	Cot. Pin End to C/L of Chain Lc	Overall Length Riveted Pin Lr + Lr	Overall Length Conn. Pin Lr + Lc	Transverse Pitch for Multi-strand TP	Rated Working Load (lbs)	Average Ultimate Strength (lbs)	Average Chain Weight (lbs/ft)
<b>140</b>	1	1.060	1.228	2.120	2.288	-	11,310	50,900	4.98
<b>140-2</b>	2	2.028	2.197	4.056	4.225	1.925	19,230	101,800	9.83
<b>140-3</b>	3	2.983	3.163	5.966	6.146	1.925	28,280	152,700	14.72
<b>140-4</b>	4	3.961	4.130	7.922	8.091	1.925	37,320	203,600	19.60
<b>140-5</b>	5	4.924	5.092	9.848	10.016	1.925	44,110	254,500	24.49
<b>140-6</b>	6	5.886	6.055	11.772	11.941	1.925	52,030	305,400	29.38

## Horsepower Ratings

Please consult Hitachi Maxco product engineering for horsepower ratings to the right of the black boundary line.

Number Teeth Small Sprocket	Maximum Speed of Small Sprocket (rpm)																								
	10	25	50	100	150	200	250	300	350	400	450	500	550	600	700	800	900	1000	1100	1200	1300	1400	1500	1600	1700
<b>9</b>	2.67	6.08	11.35	21.17	30.50	39.51	48.30	56.91	65.38	73.73	82.62	91.24	100.68	110.95	122.06	134.01	146.80	160.43	174.90	190.21	206.36	223.35	241.18	259.85	279.36
<b>10</b>	2.99	6.81	12.71	23.73	34.17	44.27	54.12	63.77	73.26	82.62	91.82	101.86	112.74	124.46	137.03	150.46	164.76	179.93	195.97	212.88	230.65	249.28	268.76	289.09	310.26
<b>11</b>	3.31	7.55	14.09	26.30	37.88	49.07	59.99	70.69	81.21	91.58	101.66	112.46	124.00	136.30	149.37	163.23	177.89	193.36	209.64	226.73	244.63	263.33	282.83	303.13	324.22
<b>12</b>	3.64	8.30	15.48	28.89	41.61	53.91	65.90	77.65	89.21	100.60	111.85	123.88	136.60	150.03	164.17	179.03	194.61	210.91	227.93	245.66	264.10	283.24	303.07	323.59	344.80
<b>13</b>	3.97	9.05	16.88	31.50	45.37	58.78	71.85	84.66	97.26	109.68	121.95	135.00	148.83	163.45	178.87	195.09	212.12	229.87	248.34	267.52	287.40	307.98	329.25	351.21	373.86
<b>14</b>	4.30	9.80	18.29	34.12	49.15	63.67	77.84	91.72	105.37	118.82	132.11	146.23	161.10	176.73	193.13	210.29	228.22	246.91	266.36	286.56	307.50	329.18	351.60	374.76	408.57
<b>15</b>	4.63	10.56	19.70	36.76	52.95	68.60	83.86	98.81	113.52	128.01	142.33	157.46	173.37	189.06	205.54	222.81	240.87	259.73	279.39	299.85	321.11	343.16	365.99	389.60	434.00
<b>16</b>	4.96	11.32	21.12	39.42	56.77	73.55	89.91	105.95	121.71	137.25	152.60	168.75	185.70	203.45	221.99	241.33	261.47	282.41	304.15	326.68	350.00	374.11	408.91	444.40	490.58
<b>17</b>	5.30	12.09	22.55	42.08	60.62	78.53	96.00	113.11	129.95	146.54	162.93	179.12	196.11	213.90	232.49	251.88	272.07	293.06	314.85	337.44	360.83	384.92	409.71	435.20	471.48
<b>18</b>	5.64	12.85	23.99	44.76	64.48	83.53	102.11	120.32	138.22	155.87	173.30	191.51	210.50	230.27	250.81	272.12	294.21	317.08	340.73	365.16	390.37	416.35	443.09	470.58	508.82
<b>19</b>	5.97	13.63	25.43	47.45	68.35	88.55	108.25	127.55	146.53	165.25	183.72	197.04	216.21	236.25	257.15	278.88	301.44	324.82	349.01	374.01	409.81	446.41	483.80	521.98	570.94
<b>20</b>	6.31	14.40	26.88	50.16	72.25	93.60	114.41	134.82	154.88	174.66	194.19	212.80	232.48	253.33	275.44	298.81	323.44	349.33	376.47	404.86	434.50	465.38	497.50	530.84	575.40
<b>21</b>	6.66	15.18	28.33	52.87	76.16	98.66	120.60	142.11	163.26	184.11	204.70	225.06	246.17	268.03	290.64	314.99	340.08	365.91	392.48	419.79	447.84	476.63	506.15	536.40	577.38
<b>22</b>	7.00	15.97	29.79	55.60	80.08	103.74	126.82	149.43	171.67	193.59	215.24	236.65	258.82	281.74	305.41	330.83	357.91	385.64	414.01	443.01	472.64	502.90	533.79	565.29	607.40
<b>23</b>	7.34	16.75	31.26	58.33	84.02	108.85	133.06	156.78	180.11	203.12	225.83	248.29	271.49	295.43	320.11	345.53	371.69	398.50	425.95	454.04	482.76	512.11	542.09	572.70	613.94
<b>24</b>	7.69	17.54	32.73	61.07	87.97	113.97	139.31	164.16	188.59	212.67	236.45	259.97	284.27	309.33	335.14	361.70	389.01	417.06	445.84	475.35	505.58	536.53	568.19	600.56	643.54
<b>25</b>	8.04	18.33	34.20	63.83	91.93	119.10	145.59	171.56	197.09	222.25	247.11	271.69	297.00	323.03	349.78	377.24	405.41	434.29	463.87	494.14	525.09	556.72	589.03	622.02	665.69
<b>26</b>	8.38	19.12	35.68	66.59	95.91	124.26	151.89	178.98	205.61	231.87	257.80	283.44	309.77	336.78	364.44	392.75	421.71	451.31	481.54	512.40	543.88	575.98	608.69	642.00	685.91
<b>28</b>	9.08	20.72	38.66	72.14	103.90	134.61	164.55	193.89	222.75	251.19	279.28	307.06	335.54	364.72	394.59	425.14	456.37	488.28	520.87	554.04	587.78	622.09	656.96	692.39	738.38
<b>30</b>	9.78	22.32	41.65	77.72	111.94	145.02	177.28	208.89	239.98	270.62	300.89	330.82	358.86	388.00	418.23	449.54	481.92	515.37	549.88	585.44	622.04	658.67	695.33	733.01	771.70
<b>32</b>	10.49	23.93	44.65	83.33	120.02	155.49	190.08	223.97	257.30	290.16	322.61	354.70	373.30	327.63	259.99	212.80	178.34	152.27	132.0	116.0					
<b>35</b>	11.56	26.36	49.19	91.79	132.22	171.29	209.39	246.73	283.45	319.65	355.39	390.74	425.74	374.76	297.40	243.41	203.99	174.17	151.0	130.0					
<b>40</b>	13.35	30.45	56.82	106.03	152.73	197.87	241.88	285.01	327.42	369.23	410.52	451.36	491.78	457.87	363.35	297.40	249.23	212.80	178.0						
<b>45</b>	15.16	34.58	64.53	120.42	173.45	224.71	274.69	323.67	371.84	419.32	466.21	512.58	558.49	546.35	433.56	354.86	297.40	253.92							
Lube	Type A	Type B															Type C								

Horsepower values given in the tables are for single strand chains. For multiple strand chains use the "Multi-Strand Factors" below.

- Type A: Manual or Drip Lubrication
- Type B: Bath or Slinger Disc Lubrication
- Type C: Oil Stream or Pressure Spray Lubrication

Number of Strands Factor	Multi-Strand Factors				
	2	3	4	5	6
	1.7	2.5	3.3	3.9	4.6