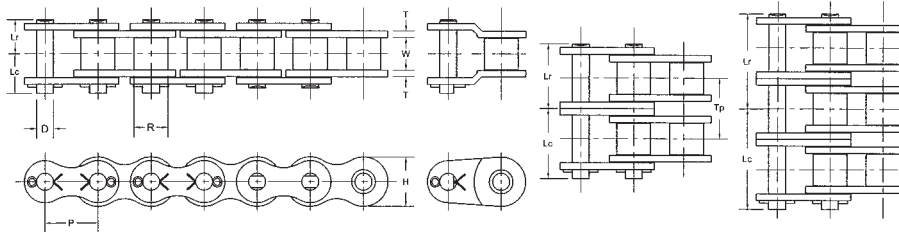


100 ASME/ANSI Roller Chain



Chain Dimensions

Note: Rated Working Load is to be used only in conjunction with "slow speed selection method"

Common Dimensions (Inches)									
ASME/ANSI Chain Number	Chain Pitch P	Inside Width W	Roller Diameter R	Pin Diameter D	Link Plate Thickness T	Roller Link Plate Height H	Number of Links in 10ft	Available Construction	
100	1 1/4	0.750	0.750	0.375	0.156	1.154	96	Cottered	Riveted
Yes	Yes								

Pin Lengths and Chain Ratings									
ASME/ANSI Chain Number	Number of Strands	Riv. Pin End to C/L of Chain Lr	Cot. Pin End to C/L of Chain Lc	Overall Length Riveted Pin Lr + Lr	Overall Length Conn. Pin Lr + Lc	Transverse Pitch for Multi-strand TP	Rated Working Load (lbs)	Average Ultimate Strength (lbs)	Average Chain Weight (lbs/ft)
100	1	0.772	0.913	1.544	1.685	-	6,360	26,400	2.62
100-2	2	1.475	1.627	2.950	3.102	1.153	10,800	52,800	5.19
100-3	3	2.180	2.332	4.360	4.512	1.153	15,900	79,200	7.77
100-4	4	2.902	3.036	5.804	5.938	1.153	20,990	105,600	10.33
100-5	5	3.603	3.744	7.206	7.347	1.153	24,800	132,000	12.92
100-6	6	4.308	4.448	8.616	8.756	1.153	29,260	158,400	15.49

Horsepower Ratings

Please consult Hitachi Maxco product engineering for horsepower ratings to the right of the black boundary line.

Number Teeth Small Sprcket	Maximum Speed of Small Sprocket (rpm)																									
	10	25	50	100	150	200	300	400	500	600	700	800	900	1000	1100	1200	1300	1400	1600	1800	2000	2200	2400	2600	2700	
9	1.02	2.33	4.34	8.10	11.67	15.12	21.78	28.22	34.50	37.33	29.63	24.25	20.32	17.35	15.04	13.20	11.71	10.47	9.45	7.19						
10	1.14	2.61	4.87	9.08	13.08	16.95	24.41	31.62	38.65	43.73	34.70	28.40	23.80	20.32	17.62	15.46	13.71	12.27	11.06	8.42						
11	1.27	2.89	5.39	10.07	14.50	18.78	27.05	35.05	42.85	50.45	40.03	32.77	27.46	23.45	20.32	17.84	15.82	14.15	12.76	9.71	8.29	7.19	6.31	1.29		
12	1.39	3.18	5.93	11.06	15.93	20.63	29.72	38.50	47.07	55.46	45.61	37.33	31.29	26.71	23.16	20.32	18.02	16.13	14.54	11.06	9.45	8.19	7.19			
13	1.52	3.46	6.46	12.06	17.36	22.50	32.40	41.98	51.32	60.47	51.43	42.10	35.28	30.12	26.11	22.92	20.32	18.18	16.40	12.47	10.60	9.23	8.10			
14	1.64	3.75	7.00	13.06	18.81	24.37	35.10	45.48	55.59	65.51	57.48	47.05	39.43	33.66	29.18	25.61	22.71	20.32	18.32	13.94	11.90	10.30	9.05			
15	1.77	4.04	7.54	14.07	20.27	26.26	37.82	49.00	59.89	70.57	63.75	52.18	43.73	37.33	32.36	28.40	25.19	22.54	20.32	15.46	13.20	11.40	10.00			
16	1.90	4.33	8.08	15.09	21.73	28.15	40.55	52.53	64.22	75.67	70.23	57.48	48.17	41.13	35.65	31.29	27.75	24.83	22.39	17.03	14.50	12.60	11.10			
17	2.03	4.63	8.63	16.11	23.20	30.06	43.29	56.09	68.56	80.79	76.91	63.0	52.76	45.05	39.04	34.27	30.39	27.19	24.52	18.65	15.90	13.80	0.79			
18	2.16	4.92	9.18	17.13	24.68	31.97	46.05	59.66	72.93	85.93	83.80	68.6	57.48	49.08	42.54	37.33	33.11	29.63	26.71	20.32	17.40	15.00				
19	2.29	5.22	9.73	18.16	26.16	33.89	48.82	63.25	77.31	91.10	90.9	74.4	62.3	53.22	46.13	40.49	35.91	32.13	28.97	22.04	18.80	16.30				
20	2.42	5.51	10.29	19.20	27.65	35.82	51.60	66.85	81.72	96.29	98.1	80.3	67.3	57.48	49.82	43.73	38.78	34.70	31.29	23.80	20.30	17.60				
21	2.55	5.81	10.84	20.24	29.15	37.76	54.39	70.47	86.14	101.5	105.6	86.4	72.4	61.8	53.61	47.05	41.72	37.33	33.66	25.61	21.90	19.00				
22	2.68	6.11	11.40	21.28	30.65	39.71	57.19	74.10	90.58	106.7	113.2	92.7	77.7	66.3	57.48	50.45	44.74	40.03	36.10	27.46	23.40	20.30				
23	2.81	6.41	11.96	22.33	32.16	41.66	60.01	77.74	95.03	112.0	121.0	99.1	83.0	70.9	61.4	53.93	47.82	42.79	38.59	29.35	25.10					
24	2.94	6.71	12.53	23.38	33.67	43.62	62.83	81.40	99.50	117.2	129.0	105.6	88.5	75.6	65.5	57.48	50.98	45.61	41.13	31.29	26.70					
25	3.08	7.02	13.09	24.43	35.19	45.59	65.66	85.07	104.0	122.5	137.2	112.3	94.1	80.3	69.6	61.1	54.20	48.49	43.73	33.26	28.40					
26	3.21	7.32	13.66	25.49	36.71	47.56	68.50	88.75	108.5	127.8	145.5	119.1	99.8	85.2	73.8	64.8	57.48	51.43	46.38	35.28	30.10					
28	3.48	7.93	14.80	27.61	39.77	51.52	74.21	96.14	117.5	138.5	159.1	133.1	111.5	95.2	82.5	72.4	64.2	57.48	51.83	39.43	33.70					
30	3.74	8.54	15.94	29.75	42.85	55.51	79.95	103.6	126.6	149.2	171.4	147.6	123.7	105.6	91.5	80.3	71.2	63.7	57.48	43.73						
32	4.02	9.16	17.09	31.89	45.94	59.51	85.72	111.1	135.8	160.0	183.8	162.6	136.3	116.3	100.8	88.5	78.5	70.2	63.3	48.17						
35	4.42	10.09	18.83	35.13	50.61	65.56	94.44	122.3	149.6	176.2	202.4	186.0	155.9	133.1	115.3	101.2	89.8	80.3	72.4	55.10						
40	5.11	11.65	21.75	40.58	58.46	75.73	109.1	141.3	172.8	203.6	233.9	227.2	190.4	162.6	140.9	123.7	109.7	98.1	88.5	67.3						
45	5.80	13.24	24.70	46.09	66.39	86.01	123.9	160.5	196.2	231.2	265.6	271.1	227.2	194.0	168.2	147.6	130.9	117.1	105.6	80.3						
Lube	Type A	Type B										Type C														

Horsepower values given in the tables are for single strand chains. For multiple strand chains use the "Multi-Strand Factors" below.

- Type A: Manual or Drip Lubrication
- Type B: Bath or Slinger Disc Lubrication
- Type C: Oil Stream or Pressure Spray Lubrication

Number of Strands Factor	Multi-Strand Factors				
	2	3	4	5	6
	1.7	2.5	3.3	3.9	4.6