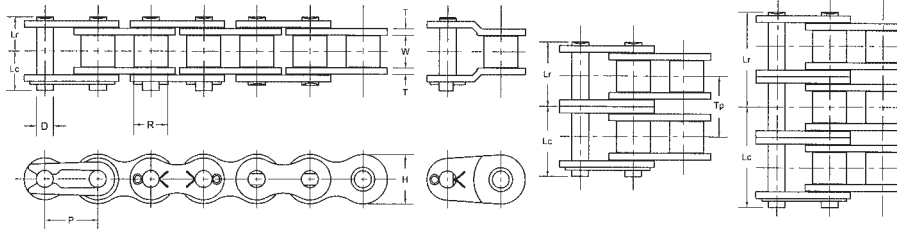


80 ASME/ANSI Roller Chain



Chain Dimensions

Note: Rated Working Load is to be used only in conjunction with "slow speed selection method"

Common Dimensions (Inches)									
ASME/ANSI Chain Number	Chain Pitch P	Inside Width W	Roller Diameter R	Pin Diameter D	Link Plate Thickness T	Roller Link Plate Height H	Number of Links in 10ft	Available Construction	
								Cottered	Riveted
80	1	0.625	0.625	0.312	0.125	0.921	120	Yes	Yes

Pin Lengths and Chain Ratings									
ASME/ANSI Chain Number	Number of Strands	Riv. Pin End to C/L of Chain Lr	Cot. Pin End to C/L of Chain Lc	Overall Length Riveted Pin Lr + Lr	Overall Length Conn. Pin Lr + Lc	Transverse Pitch for Multi-strand TP	Rated Working Load (lbs)	Average Ultimate Strength (lbs)	Average Chain Weight (lbs/ft)
80	1	0.638	0.750	1.276	1.388	-	4,140	17,600	1.69
80-2	2	1.213	1.327	2.426	2.540	1.153	7,040	35,200	3.43
80-3	3	1.790	1.955	3.580	3.745	1.153	10,350	52,800	5.16
80-4	4	2.371	2.492	4.742	4.863	1.153	13,660	70,400	6.89
80-5	5	2.949	3.067	5.898	6.016	1.153	16,150	88,000	8.63
80-6	6	3.526	3.644	7.052	7.170	1.153	19,040	105,600	10.36

Horsepower Ratings

Please consult Hitachi Maxco product engineering for horsepower ratings to the right of the black boundry line.

Number Teeth Small Sprocket	Maximum Speed of Small Sprocket (rpm)																											
	10	25	50	100	150	200	300	400	500	600	700	800	900	1000	1100	1200	1400	1600	1800	2000	2200	2400	2700	3000	3400			
9	0.53	1.22	2.27	4.23	6.09	7.90	11.37	14.73	18.01	21.22	24.38	20.29	17.00	14.51	12.58	11.04	8.76	7.17	6.01	5.13								
10	0.60	1.36	2.54	4.74	6.83	8.85	12.74	16.51	20.18	23.78	27.32	23.76	19.91	17.00	14.74	12.93	10.26	8.40	7.04	6.01								
11	0.66	1.51	2.82	5.26	7.57	9.81	14.13	18.30	22.37	26.36	30.28	27.41	22.97	19.61	17.00	14.92	11.84	9.69	8.12	6.93	6.01	5.27	4.42	3.77	3.70			
12	0.73	1.66	3.09	5.77	8.32	10.77	15.52	20.10	24.57	28.96	33.26	31.23	26.17	22.35	19.37	17.00	13.49	11.04	9.25	7.90	6.85	6.01	5.04	4.30				
13	0.79	1.81	3.37	6.29	9.07	11.75	16.92	21.92	26.79	31.57	36.27	35.22	29.51	25.20	21.84	19.17	15.21	12.45	10.43	8.91	7.72	6.78	5.68	4.85				
14	0.86	1.96	3.65	6.82	9.82	12.72	18.33	23.74	29.02	34.20	39.29	39.36	32.98	28.16	24.41	21.42	17.00	13.91	11.66	9.96	8.63	7.57	6.35	5.42				
15	0.92	2.11	3.94	7.35	10.58	13.71	19.75	25.58	31.27	36.85	42.33	43.65	36.58	31.23	27.07	23.76	18.85	15.43	12.93	11.04	9.57	8.40	7.04	6.02				
16	0.99	2.26	4.22	7.88	11.35	14.70	21.17	27.43	33.53	39.51	45.39	48.08	40.30	34.41	29.82	26.17	20.77	17.00	14.25	12.16	10.50	9.25	7.76	6.62				
17	1.06	2.41	4.51	8.41	12.11	15.69	22.60	29.28	35.80	42.18	48.46	52.66	44.13	37.68	32.66	28.66	22.75	18.62	15.60	13.32	11.50	10.10	8.49	7.25				
18	1.13	2.57	4.79	8.94	12.88	16.69	24.04	31.15	38.08	44.87	51.54	57.38	48.08	41.05	35.59	31.23	24.78	20.29	17.00	14.51	12.60	11.00	9.25	7.90				
19	1.19	2.72	5.08	9.48	13.66	17.70	25.49	33.02	40.37	47.56	54.64	61.62	52.15	44.52	38.59	33.87	26.88	22.00	18.44	15.74	13.60	12.00	10.00	8.57				
20	1.26	2.88	5.37	10.02	14.44	18.70	26.94	34.90	42.66	50.27	57.75	65.13	56.32	48.08	41.68	36.58	29.03	23.76	19.91	17.00	14.70	12.90	10.80					
21	1.33	3.03	5.66	10.57	15.22	19.72	28.40	36.79	44.97	52.99	60.88	68.65	60.59	51.73	44.84	39.36	31.23	25.56	21.42	18.29	15.90	13.90	11.70					
22	1.40	3.19	5.95	11.11	16.00	20.73	29.86	38.69	47.29	55.72	64.02	72.19	64.97	55.47	48.08	42.20	33.49	27.41	22.97	19.61	17.00	14.90	12.50					
23	1.47	3.35	6.25	11.66	16.79	21.75	31.33	40.59	49.62	58.46	67.16	75.74	69.45	59.30	51.40	45.11	35.80	29.30	24.55	20.97	18.20	15.90	13.40					
24	1.54	3.50	6.54	12.20	17.58	22.77	32.80	42.50	51.95	61.21	70.32	79.30	74.03	63.21	54.79	48.08	38.16	31.23	26.17	22.35	19.40	17.90	14.20					
25	1.61	3.66	6.83	12.75	18.37	23.80	34.28	44.41	54.29	63.97	73.49	82.88	78.70	67.2	58.25	51.12	40.57	33.20	27.83	23.76	20.60	18.10	15.10					
26	1.68	3.82	7.13	13.31	19.17	24.83	35.77	46.33	56.64	66.74	76.67	86.46	83.47	71.3	61.8	54.22	43.02	35.22	29.51	25.20	21.80	19.20	16.10					
28	1.81	4.14	7.72	14.41	20.76	26.90	38.75	50.20	61.36	72.30	83.06	93.67	93.3	79.7	69.0	60.6	48.08	39.36	32.98	28.16	24.40	21.40						
30	1.96	4.46	8.32	15.53	22.37	28.98	41.74	54.08	66.11	77.89	89.49	100.9	103.5	88.3	76.6	67.2	53.33	43.65	36.58	31.23	27.10	23.80						
32	2.10	4.78	8.92	16.65	23.98	31.07	44.76	57.98	70.88	83.52	95.95	108.2	114.0	97.3	84.3	74.0	58.7	48.08	40.30	34.41	29.80	26.20						
35	2.31	5.27	9.83	18.34	26.42	34.23	49.30	63.87	78.08	92.00	105.7	119.2	130.4	111.3	96.5	84.7	67.2	55.00	46.09	39.36	34.10							
40	2.67	6.08	11.35	21.19	30.52	39.54	56.95	73.78	90.19	106.3	122.1	137.7	153.1	136.0	117.9	103.5	82.1	67.2	56.32	48.08	20.00							
45	3.03	6.91	12.90	24.06	34.66	44.90	64.68	83.79	102.4	120.7	138.7	156.4	173.8	162.3	140.7	123.5	98.0	80.2	67.2	57.38								
Lube	Type A	Type B																Type C										

Horsepower values given in the tables are for single strand chains. For multiple strand chains use the "Multi-Strand Factors" below.

- Type A: Manual or Drip Lubrication
- Type B: Bath or Sliger Disc Lubrication
- Type C: Oil Stream or Pressure Spray Lubrication

Number of Strands Factor	Multi-Strand Factors				
	2	3	4	5	6
	1.7	2.5	3.3	3.9	4.6