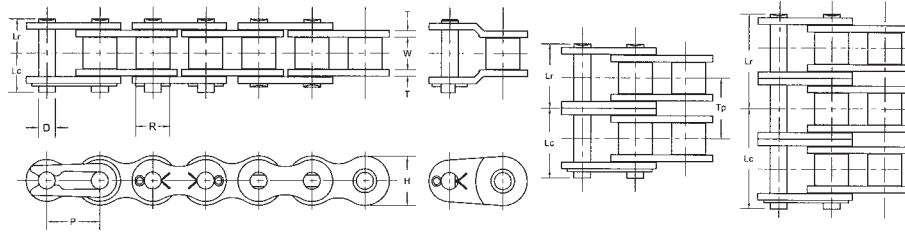


## 40 ASME/ANSI Roller Chain



### Chain Dimensions

Note: Rated Working Load is to be used only in conjunction with "slow speed selection method"

Common Dimensions (Inches)									
ASME/ANSI Chain Number	Chain Pitch P	Inside Width W	Roller Diameter R	Pin Diameter D	Link Plate Thickness T	Roller Link Plate Height H	Number of Links in 10ft	Available Construction	
								Cottered	Riveted
40	1/2	0.312	0.312	0.156	0.060	0.463	240	No	Yes

Pin Lengths and Chain Ratings									
ASME/ANSI Chain Number	Number of Strands	Riv. Pin End to C/L of Chain Lr	Cot. Pin End to C/L of Chain Lc	Overall Length Riveted Pin Lr + Lr	Overall Length Conn. Pin Lr + Lc	Transverse Pitch for Multi-strand TP	Rated Working Load (lbs)	Average Ultimate Strength (lbs)	Average Chain Weight (lbs/ft)
40	1	0.327	0.378	0.654	0.705	-	940	4,300	0.40
40-2	2	0.606	0.661	1.213	1.268	0.567	1,600	8,600	0.82
40-3	3	0.886	0.949	1.772	1.835	0.567	2,350	12,900	1.24
40-4	4	1.181	1.213	2.362	2.394	0.567	3,100	17,200	1.65
40-5	5	1.469	1.508	2.937	2.976	0.567	3,670	21,500	2.11
40-6	6	1.752	1.787	3.504	3.539	0.567	4,320	25,800	2.54

### Horsepower Ratings

Please consult Hitachi Maxco product engineering for horsepower ratings to the right of the black boundary line.

Number Teeth Small Sprocket	Maximum Speed of Small Sprocket (rpm)																									
	10	25	50	100	200	300	400	500	700	900	1000	1200	1400	1600	1800	2100	2400	2700	3000	3500	4000	5000	6000	7000	8000	
9	0.06	0.14	0.27	0.50	0.93	1.34	1.74	2.12	2.87	3.60	3.96	4.67	5.03	4.12	3.45	2.74	2.24	1.88	1.60	1.27						
10	0.07	0.16	0.30	0.56	1.04	1.50	1.95	2.38	3.22	4.04	4.44	5.23	5.89	4.82	4.04	3.21	2.63	2.20	1.88	1.49						
11	0.08	0.18	0.33	0.62	1.16	1.66	2.16	2.64	3.57	4.47	4.92	5.80	6.66	5.57	4.66	3.70	3.03	2.54	2.17	1.72	1.41	1.01	0.77	0.61	0.50	
12	0.09	0.20	0.36	0.68	1.27	1.83	2.37	2.90	3.92	4.91	5.40	6.37	7.31	6.34	5.31	4.22	3.45	2.89	2.47	1.96	1.60	1.15	0.87	0.69	0.57	
13	0.09	0.21	0.40	0.74	1.38	1.99	2.58	3.16	4.27	5.36	5.89	6.94	7.97	7.15	5.99	4.76	3.89	3.26	2.79	2.21	1.81	1.29	0.98	0.78	0.64	
14	0.10	0.23	0.43	0.80	1.50	2.16	2.80	3.42	4.63	5.80	6.38	7.52	8.64	7.99	6.70	5.31	4.35	3.65	3.11	2.47	2.02	1.45	1.10	0.87	0.71	
15	0.11	0.25	0.46	0.87	1.62	2.33	3.01	3.68	4.99	6.25	6.88	8.10	9.31	8.86	7.43	5.89	4.82	4.04	3.45	2.74	2.24	1.60	1.22	0.97	0.79	
16	0.12	0.27	0.50	0.93	1.73	2.49	3.23	3.95	5.35	6.70	7.37	8.69	9.98	9.76	8.18	6.49	5.31	4.45	3.80	3.02	2.47	1.77	1.34	1.07	0.87	
17	0.12	0.28	0.53	0.99	1.85	2.66	3.45	4.22	5.71	7.16	7.87	9.27	10.65	10.69	8.96	7.11	5.82	4.88	4.17	3.31	2.71	1.94	1.47	1.17	0.96	
18	0.13	0.30	0.56	1.05	1.97	2.83	3.67	4.49	6.07	7.61	8.37	9.86	11.33	11.65	9.76	7.75	6.34	5.31	4.54	3.60	2.95	2.11	1.60	1.27		
19	0.14	0.32	0.60	1.12	2.08	3.00	3.89	4.76	6.44	8.07	8.87	10.46	12.01	12.64	10.59	8.40	6.88	5.76	4.92	3.91	3.20	2.29	1.74	1.38		
20	0.15	0.34	0.63	1.18	2.20	3.17	4.11	5.03	6.80	8.53	9.38	11.05	12.70	13.65	11.44	9.07	7.43	6.22	5.31	4.22	3.45	2.47	1.88	1.49		
21	0.16	0.36	0.67	1.24	2.32	3.35	4.33	5.30	7.17	8.99	9.89	11.65	13.39	14.68	12.30	9.76	7.99	6.70	5.72	4.54	3.71	2.66	2.02	1.60		
22	0.16	0.38	0.70	1.31	2.44	3.52	4.56	5.57	7.54	9.46	10.40	12.25	14.07	15.74	13.19	10.47	8.57	7.18	6.13	4.87	3.98	2.85	2.17	1.72		
23	0.17	0.39	0.74	1.37	2.56	3.69	4.78	5.85	7.91	9.92	10.91	12.85	14.77	16.65	14.10	11.19	9.16	7.68	6.55	5.20	4.26	3.05	2.32	1.84		
24	0.18	0.41	0.77	1.44	2.68	3.87	5.01	6.12	8.29	10.39	11.42	13.46	15.46	17.44	15.03	11.93	9.76	8.18	6.99	5.54	4.54	3.25	2.47	1.96		
25	0.19	0.43	0.81	1.50	2.80	4.04	5.23	6.40	8.66	10.86	11.94	14.07	16.16	18.22	15.98	12.68	10.38	8.70	7.43	5.89	4.82	3.45	2.63			
26	0.20	0.45	0.84	1.57	2.93	4.21	5.46	6.67	9.03	11.33	12.45	14.67	16.86	19.01	16.95	13.45	11.01	9.23	7.88	6.25	5.12	3.66	2.79			
28	0.21	0.49	0.91	1.70	3.17	4.57	5.91	7.23	9.79	12.27	13.49	15.90	18.26	20.59	18.94	15.03	12.30	10.31	8.80	6.99	5.72	4.09	3.11			
30	0.23	0.53	0.98	1.83	3.41	4.92	6.37	7.79	10.54	13.22	14.53	17.13	19.68	22.19	21.01	16.67	13.65	11.44	9.76	7.75	6.34	4.54	3.45			
32	0.25	0.56	1.05	1.96	3.66	5.27	6.83	8.35	11.30	14.17	15.58	18.36	21.10	23.79	23.14	18.37	15.03	12.60	10.76	8.54	6.99	5.00				
35	0.27	0.62	1.16	2.16	4.03	5.81	7.53	9.20	12.45	15.61	17.17	20.23	23.24	26.21	26.47	21.01	17.20	14.41	12.30	9.76	7.99	5.72				
40	0.31	0.72	1.34	2.50	4.66	6.71	8.69	10.63	14.39	18.04	19.83	23.37	26.84	30.27	32.34	25.67	21.01	17.61	15.03	11.93	9.76	6.99				
45	0.36	0.81	1.52	2.84	5.29	7.62	9.87	12.07	16.34	20.48	22.52	26.54	30.49	34.38	38.22	30.63	25.07	21.01	17.94	14.23	11.70					
Lube	Type A					Type B										Type C										

Horsepower values given in the tables are for single strand chains. For multiple strand chains use the "Multi-Strand Factors" below.

- Type A: Manual or Drip Lubrication
- Type B: Bath or Slinger Disc Lubrication
- Type C: Oil Stream or Pressure Spray Lubrication

Number of Strands Factor	Multi-Strand Factors				
	2	3	4	5	6
	1.7	2.5	3.3	3.9	4.6